

## 100W 24V DC Indoor Power

MODEL HS-24E100  
INPUT 180~250V AC  
OUTPUT 24V DC 4.2A 100W

### Features:

- Slimline design with aluminum housing
- Protections: Short circuit/Over load
- Designed for indoor signage, decoration or lighting applications
- Small size, light weight, easy installation

SELV    

### INPUT

INPUT VOLTAGE 180~250V AC  
(Refer to the derating curve of "Loading and Input voltage")

FREQUENCY RANGE 50Hz

EFFICIENCY 86%

AC CURRENT  $\leq 0.8A@230VAC$

AC INRUSH CURRENT 46A@230VAC

LEAKAGE CURRENT 0.25mA/230VAC

### PROTECTION

OVER LOAD 115%-150 rated power,  
Protection Type:auto-recovery,  
after fault condition is removed

SHORT CIRCUIT Protection Type:recovery  
automatically after fault condition  
is removed

### SAFETY & EMC

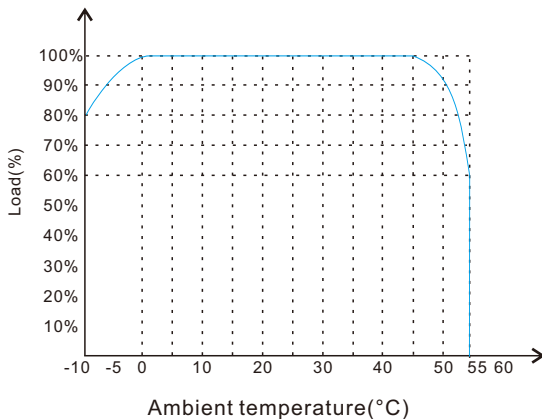
SAFETY STANDARDS IEC61347 A1 +A14

EMC EN 55015;EN 61547;EN 61000-3-2;  
EN 61000-3-3

WITHSTAND VOLTAGE I/P-FG:1.5KV AC I/P-O/P:3.0KV AC

ISOLATION I/P-O/P:> 100M Ohms/500VDC/25°C  
/75%RH

### LOADING AND AMBIENT TEMPERATURE



### OUTPUT

DC OUTPUT 24V

OUTPUT CURRENT 4.2A

RATED POWER 100W

VOLTAGE TOLERANCE  $\pm 5\%$

RIPPLE NOISE 200mV P-P(Max.)

SETUP RISE TIME  $\leq 2000mS(Max.)/230VAC$

### ENVIRONMENT

OPERATING TEMPERATURE -25°C~+40°C  
(Refer to the derating curve of "Loading and Ambient temperaturer")

OPERATING HUMIDITY 5%~95%

STORAGE TEMPERATURE -35°C~+65°C

### WEIGHT & PACKING

PRODUCT DIMENSION 218x47x30.5mm

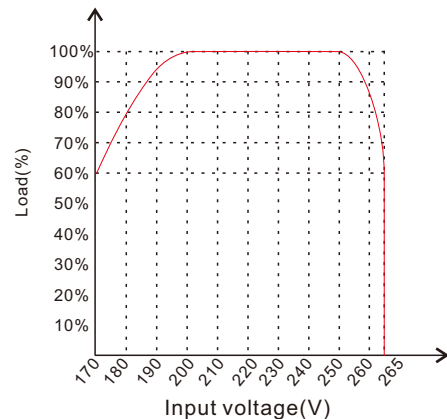
NET WEIGHT 0.27KG

QUANTITY/CARTON 50PCS

PACKING DIMENSION 395x280x205mm

GROSS WEIGHT 15.5KG

### LOADING AND INPUT VOLTAGE



### INSTALLATION GUIDE

- It is recommended to use no more than 80% of the rated load of a power supply, to have tolerance for the power increase of LED modules or strips when their running temperature goes up.
- It is very important to have enough ventilation for a power supply to avoid overheating.
- Do not install the power supply in a closed place, or near flammable or explosive objects, or in a place easily flooded.
- Choose wires with correct AWG or copper area for electrical connection according to the rated current.

## OVERVIEW



## TOP VIEW



## FRONT VIEW



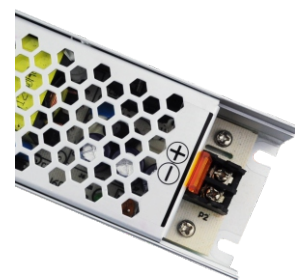
## BOTTEM VIEW



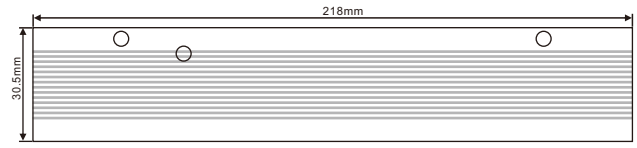
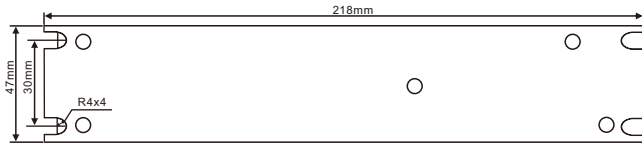
## AC INPUT CONNECTION



## DC OUTPUT CONNECTION



## PRODUCT DIMENSIONS



## INNER BOX



## OUTER CARTON

